

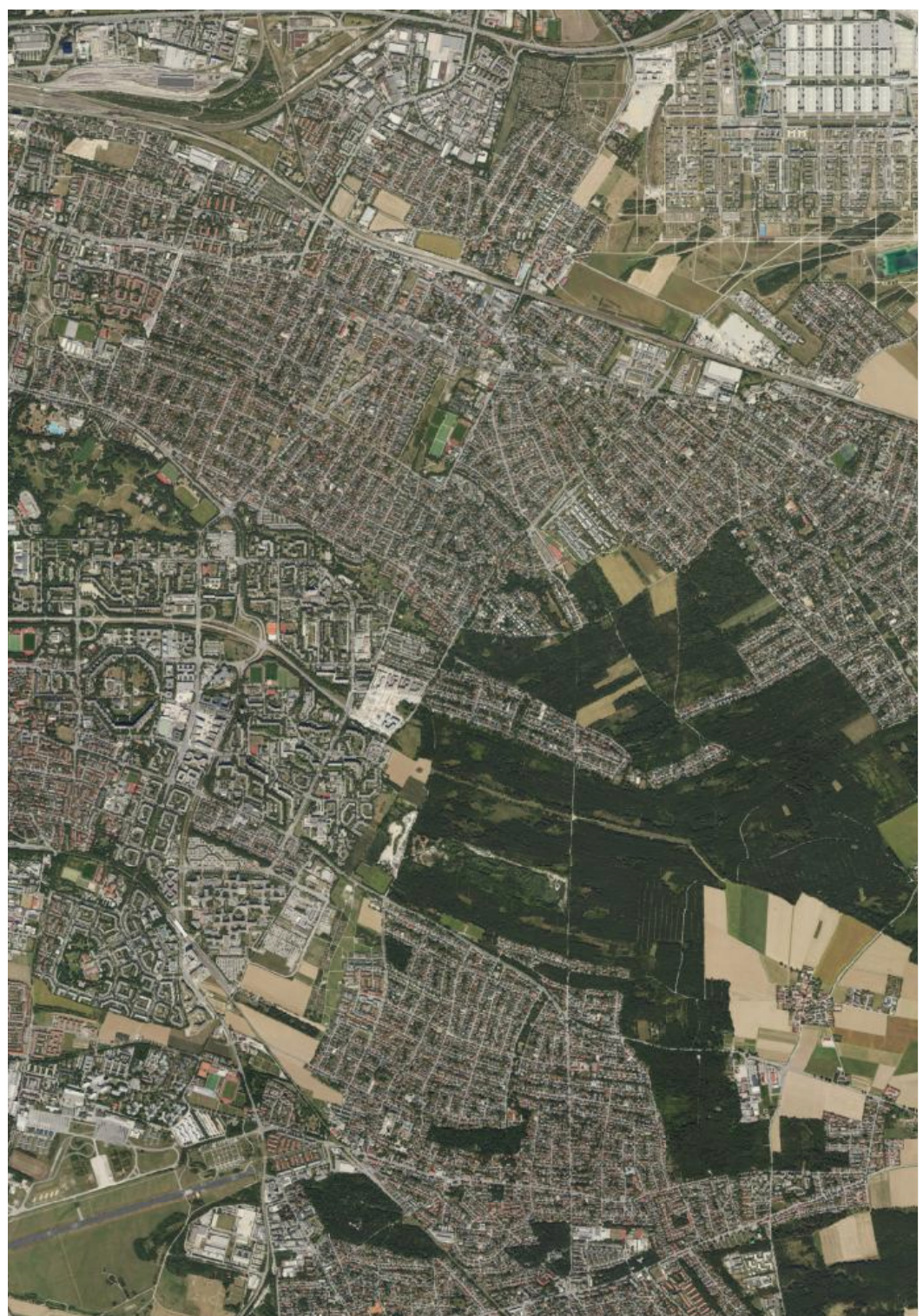
In contrast to the dense urban of cities, open spaces are often a valuable, enduring, resilient element in inner cities. Paradigmatic in that respect are the rectangular void of Central Park in Manhattan, the green space of Hyde Park in London, or the vast gravel field of Theresienwiese in Munich. These open spaces are located in the heart of the city and bordered by prominent and impressive buildings.

However, the rapid expansion of cities in the past century, particularly since 1945, has led to a lack of conscious planning for open spaces. These areas are often left as gaps or afterthoughts between suburban communities outside of the city. Nowadays, many of these loosely built areas require attractive green spaces and pathways connecting different parts of the city.

Munich, along with other cities, is making an effort to establish green strips – called “Parkmeilen.” These open fields should allow linkages, provide opportunities for leisure, sports or gardening. Instead of a strict concept of form giving, these open spaces follow a pragmatic shape, defined by the incidental borders of built areas and leftover spaces between. This is not seen as a critic, but as a chance to establish specific and surprising shapes of open spaces.

This semester we will work with these local qualities, giving sense to certain parts of the open space, and creating relations with buildings that border it. This will give a new and clear definition along the open space and provide character and recognition to areas that are currently underdefined. The buildings should stand for themselves and are able to influence the use and character of the open space in front of them. Some of these buildings would act very locally, while others could may act almost as monuments on a large distance, providing moments of orientation.

As a group we will investigate the wider area of a linear park; creating context, character of place and ideas of useful relations between inside and outside for living, working or rural production.





Week 1 18 <sup>th</sup> April
Introduction to the Semester by Studio Krucker Bates Introduction to exercises one and two
Week 2 24 <sup>th</sup> /25 <sup>th</sup> April
Assistant tutorials (exercises one and two) Introduction to exercise three
Week 3 2 <sup>nd</sup> May
Assistant tutorials (exercises one, two and three)
Week 4 8 <sup>th</sup> /9 <sup>th</sup> May
Lecture by Bruno Krucker, 11.30 am Pin Up 1 with BK (exercises one, two and three) Introduction to exercise four
Week 5 15 <sup>th</sup> /16 <sup>th</sup> May
Assistant tutorials (exercises three and four)
Week 6 22 <sup>nd</sup> /23 <sup>rd</sup> May
Lecture by Bruno Krucker, 11.30 am Pin Up 2 with BK (exercises three and four) Introduction to exercises five and six
Week 7 30 <sup>th</sup> May
Pentecost - Assistant tutorials voluntary
Week 8 5 <sup>th</sup> /6 <sup>th</sup> June
Lecture by Stephen Bates, 11.30 am - via Zoom Assistant tutorials (exercises five and six)
Week 9 12 <sup>th</sup> /13 <sup>th</sup> June
Assistant tutorials (exercises five and six)
Week 10 19 <sup>th</sup> /20 <sup>th</sup> June
Lecture by Stephen Bates, 11.30 am - via Zoom Pin Up 3 with BK (exercises five and six) Introduction to exercise seven
Week 11 26 <sup>th</sup> /27 <sup>th</sup> June
no tutorials - BA 4 <sup>th</sup> semester on excursion
Week 12 3 <sup>rd</sup> /4 <sup>th</sup> July
Assistant tutorials (exercise seven)
Week 13 10 <sup>th</sup> /11 <sup>th</sup> July
Assistant tutorials (all exercises)
13th July
Hand in models
Week 14 17th/18th July
Final review with Bruno Krucker and Stephen Bates

Exercise one: Found Moments - Parkside living
The first exercise we wish you to undertake in groups is a speculation about the possible atmospheric character of spaces between a building or a block in front of green spaces. The relationship between a house and a green space, and how do they become appropriated to the residents. We ask you to consider what kind of building at a Park side this could be. Something that you have experienced – living with private garden, shared garden, open field, agriculture or recreation area, close to your habitation? What potential spatial moments could be incorporated in your future design: a certain material atmosphere, a structural expression perhaps, multiple scales of spaces? We ask you to find an existing building connected to a green space that you can gain access to. Having made your choice together, you will need to study the space / interface carefully and find a good position to photograph it, paying attention to the light level and composition of the photograph. Additional to the study of atmosphere you are asked to survey a specific theme on your site, that you learn to know your project area. The way of presenting these notations should be adapted to the theme you have found.
Exercise two: Case study
The second exercise we wish you to undertake is intended to bring some intelligence and research to your work, for we are not only engaging with architectural design, but also exploring ways of living – in particular of living and working, hybrid buildings, and the operation of many different uses within a building. Each group is therefore asked to survey a given building to identify this kind of living and working arrangement towards a green space. You will need to understand living and multifunctional buildings, and research how they organise themselves, how they have developed their project, how they live and work and, most importantly, how their buildings are organized spatially and architecturally. The given buildings may be based anywhere in the world, but you should have a full understanding of their organisation, their culture – the rules by which they live and work, what they share and what they call their own. You will be required to present your given case study to the studio with photographs, drawings (site plan, typical floor plan, section) and a grey card model scale 1:200 and one typical piece in scale 1:25 to show the threshold from the building façade to the outside space.
Exercise three: Urban strategy
This exercise requires you to make a 1:500 model of the wider surrounding area in painted foam board and a 1:200 block model of your closer site in grey card. The models will be produced as a group work and requires both accuracy and careful coordination, so that each 1:500 site model can be seen as one of the whole continuous Parkmeile produced by all the groups in the studio. Both models can then be used as a tool to help develop a concept for your project. Painted foam board study models should explore the scale and form of the building and its relationship with the immediate context. Having established the formal character of the urban massing, you should place your versions precisely within the 1:500 (in foam board) and 1:200 (in grey card) models. While priority will be given to an extensive exploration of different massing options, you will be expected to produce drawings in the form of sketches and schematic plans, sections/elevations.
www.lsw.ar.tum.de

At this stage in the development of your project we ask you to study the internal organisation of your building at a larger scale. Study models at a scale of 1:50 should be produced in grey card or white foam board to investigate the internal spatial organisation of your project and the interconnection of different rooms and spaces towards the park space. The way the building engages with the ground is paramount. These models are not intended to be ‘complete’, but as tools for studying the relationship between floors and across space. An ‘open’ approach to the rooms and their projected use should direct your thinking in terms of internal planning. The position of doors and windows, the spatial possibilities for linking spaces and moving through them, large and small spaces with varying ceiling heights should be carefully considered.
Exercise five: Façade
With the knowledge you now have, you will investigate the design of the facades of your project in greater detail. Studies should be made of the relief and proportion of the facade through drawings and sketch models. Priority lies in the relationship of house and green space and the transition between private and public and the consistent use from inside to outside. You will construct a model of a significant part of your building, with a focus on the detail of the facades at 1:50 in foam board and thick card. One area of detail of the building should be made at a scale of 1:25 so that a deeper understanding of materials and relationship to the outside can be established. The manner in which this model is made and the techniques employed to give detail and texture should be considered very carefully.
Exercise six: Small moments
This exercise is intended to allow you to present some of the special situations that you have developed in your design: ‘small moments’ which reveal the special qualities of your project. These should be described by 1:25 models (we are expecting between 1 and 2 models, depending on the size of the project and group) made from foam board and other materials, including coloured paper and precisely detailed models of objects. You will then photograph each ‘small moment’ model – only less Photoshop allowed! Great care should be given to the making of the model in order to express the atmosphere that you are seeking to achieve.
Exercise seven: Image
With the knowledge acquired and the intention you have established for your project, you are now asked to produce one image of the project within its context. The drawing should be constructed from carefully made photographs and/or models, or set up using 3D modelling and light rendering. The view should be taken at eye level and all vertical lines should be precisely vertical – wide angles or distorted views are not acceptable! A high standard of composition and technique is expected and the image should convey the atmosphere and character of the project along the Parkmeile.
Final review
The final review in mid of July will consider all the work produced during the semester. In addition, you will be asked to prepare a PDF- presentation of your project. It is important that you are able to describe the development of your work accurately and precisely and include models of your final project at 1:500, 1:200, 1:50 and 1:25, the case study, ‘small moments’ and exterior image. In addition to the material you have already produced you are required to present a 1:500 site plan and plans and sections at 1:200/1:50.